



FCC TEST REPORT

Applicant: Dongguan Koin Electronics Co., Ltd (Chimitech)

Address: Room 1201, Building 31, No. 7 Houjie Science and Technology Avenue, Houjie Town, Dongguan City, Guangdong 523960

Manufacturer: Dongguan Koin Electronics Co., Ltd (Chimitech)

Address: Room 1201, Building 31, No. 7 Houjie Science and Technology Avenue, Houjie Town, Dongguan City, Guangdong 523960

Product Name: USB 4.0 Gen2x2 Full Featured Cable

Trade Mark: N/A

Model Number: CMU4P-090, CMU4P-010, CMU4P-015, CMU4P-020, CMU4P-030, CMU4P-040, CMU4P-050, CMU4P-060, CMU4P-070, CMU4P-075, CMU4P-080, CMU4P-095

Date of Receipt: May. 08, 2026

Test Date: May. 08, 2026 - May. 15, 2026

Date of Report: May. 15, 2026

Prepared By: Shenzhen DL Testing Technology Co., Ltd.

Address: 101-201, Comprehensive Building, Tongzhou Electronics Longgang Factory Area, No.1 Baolong Fifth Road, Baolong Community, Baolong Street, Longgang District, Shenzhen, China

Applicable Standards: FCC Part 15 Subpart B
ANSI C63.4:2014

Test Result: Pass

Report Number: DLE-260508004R

Prepared (Test Engineer): HuiLian Xu

Reviewer (Supervisor): Jack Bu

Approved (Manager): Jade Yang



This test report is based on a single evaluation of one sample of above mentioned products. It is not permitted to be duplicated in extracts without written approval of Shenzhen DL Testing Technology Co., Ltd.



TABLE OF CONTENT

Test Report Declaration	Page
1. VERSION	3
2. TEST SUMMARY	3
3. GENERAL INFORMATION	4
4. TEST INSTRUMENT USED.....	5
5. CONDUCTED EMISSION TEST.....	6
6. RADIATION EMISSION TEST.....	8
7. SETUP PHOTOGRAPHS	12
8. EUT PHOTOGRAPHS	13

**1. VERSION**

Version No.	Date	Description
00	May. 15, 2026	Original

2. TEST SUMMARY

EMC Emission			
Standard	Test Item	Limit	Result
FCC PART 15 B	Conducted Emission at power ports	Class B	N/A
	Radiated Emission below 1GHz	Class B	PASS
	Radiated Emission above 1GHz	Class B	N/A

NOTE:

(1) "N/A" denotes test is not applicable in this Test Report

(2) Test Facility: Shenzhen DL Testing Technology Co., Ltd.

Address: 101-201, Comprehensive Building, Tongzhou Electronics Longgang Factory Area, No.1 Baolong Fifth Road, Baolong Community, Baolong Street, Longgang District, Shenzhen, China

FCC Test Firm Registration Number: 854456

IC Registered No.: 27485

Designation Number: CN1307


CAB ID.: CN0118

(3) Report version: FCC Part 15 Subpart B_202601



3. GENERAL INFORMATION

3.1 Description of Device (EUT)

Product Name:	USB 4.0 Gen2x2 Full Featured Cable
Trade Mark:	N/A
Model Number:	CMU4P-090, CMU4P-010, CMU4P-015, CMU4P-020, CMU4P-030, CMU4P-040, CMU4P-050, CMU4P-060, CMU4P-070, CMU4P-075, CMU4P-080, CMU4P-095
Test Model:	CMU4P-090
Model difference:	All models are same as the samples except model name and appearance color, they have the same structure and circuit.
Power Supply:	20V  5A 100W
Working Frequency:	Below 108MHz
Note1: For a more detailed features description, please refer to the manufacturer's specifications or the User's Manual.	
Note2: The EUT's all information provided by client.	

3.2 Tested System Details

None.

3.3 Block Diagram of Test Set-up



3.4 Test Mode Description

Adapter (Provide by test lab):

Manufacturer: XIAOMI

Model: A07ZM

I/P: 200-240V 50Hz 1.8A

Type-C1/Type-C2 O/P: DC 5V/3A, DC 9V/3A, DC11V/6.1A,

DC 12V/3A, DC 15V/3A, DC 20V/3.25A 67W MAX

3.5 Test Auxiliary Equipment

None.

3.6 Test Uncertainty

Conducted Emission Uncertainty : $\pm 2.56\text{dB}$

Radiated Emission Uncertainty : $\pm 3.65\text{dB}$



4. TEST INSTRUMENT USED

For Conducted Emission Test (843 Shielded Room)

Equipment	Manufacturer	Model	Serial	Last Cal.	Next Cal.
843 Shielded Room	YIHENG	843 Room	843	Nov. 05, 2023	Nov. 04, 2026
EMI Receiver	R&S	ESR	101421	Oct. 25, 2025	Oct. 24, 2026
LISN	R&S	ENV216	102417	Oct. 25, 2025	Oct. 24, 2026
Clamp	COM-POWER	CLA-050	431072	Oct. 27, 2025	Oct. 26, 2026
3-Loop Antenna	DAZE	ZN30401	13021	Oct. 27, 2025	Oct. 26, 2026
ISN T8	Schwarzbeck	NTFM 8158	101135	Oct. 25, 2025	Oct. 24, 2026
ISN T5	Schwarzbeck	NTFM 8158	101136	Oct. 25, 2025	Oct. 24, 2026
843 Cable 1#	ChengYu	CE Cable	001	Oct. 25, 2025	Oct. 24, 2026
843 Cable 1#	ChengYu	CL Cable	002	Oct. 25, 2025	Oct. 24, 2026

For Radiated Emission Test (966 chamber)

Equipment	Manufacturer	Model	Serial	Last Cal.	Next Cal.
966 chamber	YIHENG	966 Room	966	Nov. 06, 2023	Nov. 05, 2026
Spectrum Analyzer	Agilent	E4408B	MY50140780	Oct. 25, 2025	Oct. 24, 2026
EMI Receiver	R&S	ESRP7	101393	Oct. 25, 2025	Oct. 24, 2026
Amplifier	Schwarzbeck	BBV9743B	00153	Oct. 25, 2025	Oct. 24, 2026
Amplifier	EMEC	EM01G8GA	00270	Oct. 25, 2025	Oct. 24, 2026
Broadband Trilog Antenna	Schwarzbeck	VULB9162	00306	Oct. 26, 2025	Oct. 25, 2026
Horn Antenna	Schwarzbeck	BBHA9120D	02139	Oct. 26, 2025	Oct. 25, 2026
966 Cable 1#	ChengYu	966	004	Oct. 25, 2025	Oct. 24, 2026
966 Cable 2#	ChengYu	966	003	Oct. 25, 2025	Oct. 24, 2026

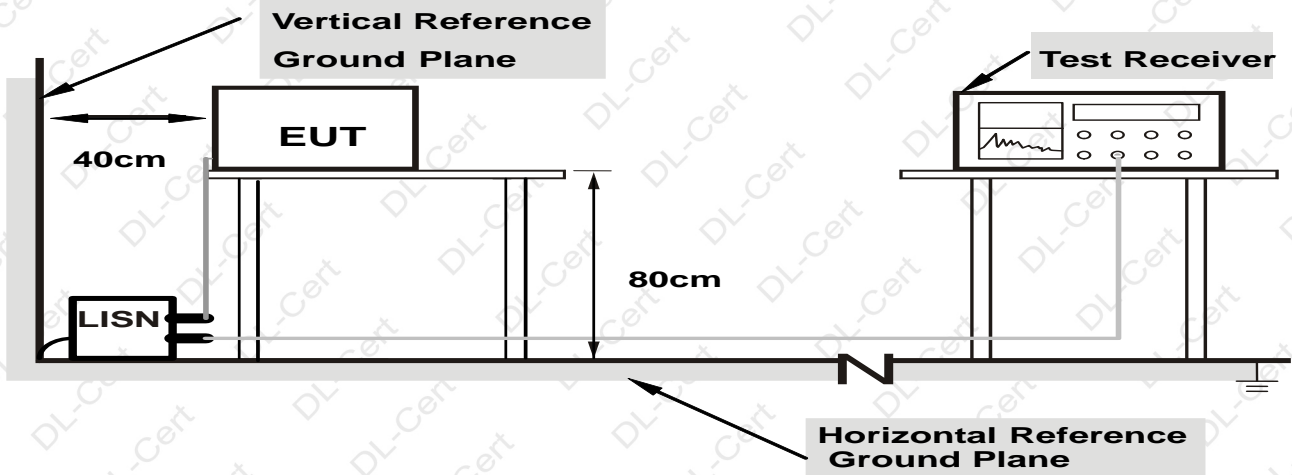
Other

Item	Name	Manufacturer	Model	Software version
1	EMC Conduction Test System	FALA	EZ_EMCC	EMC-CON 3A1.1
2	EMC radiation test system	FALA	EZ_EMCC	FA-03A2

5. CONDUCTED EMISSION TEST

5.1 Block Diagram of Test Setup

For Mains Terminals Test



Note: 1. Support units were connected to second LISN.

2. Both of LISNs (AMN) are 80 cm from EUT and at least 80 cm from other units and other metal planes

5.2 Test Standard and Limit

FCC PART 15 B

Frequency MHz	Limits dB(μV)	
	Quasi-peak Level	Average Level
0.15~0.50	66 ~ 56*	56 ~ 46*
0.50~5.00	56	46
5.00~30.00	60	50

Notes: 1. *Decreasing linearly with logarithm of frequency.

2. The lower limit shall apply at the transition frequencies.

5.3 EUT Configuration on Test

The following equipment's are installed on conducted emission test to meet FCC PART 15 B requirement and operating in a manner which tends to maximize its emission characteristics in a normal application.

5.4 Operating Condition of EUT

5.4.1 Setup the EUT and simulators as shown in Section 5.1.

5.4.2 Turn on the power of all equipments.

5.4.3 Let the EUT work in test modes and test it.



5.5 Test Procedure

The EUT is put on the table and connected to the AC mains through a Artificial Mains Network (AMN) or ISN. This provided a 50ohm coupling impedance for the tested equipments. Both sides of AC line are checked to find out the maximum conducted emission levels according to the **ANSI C63.4** regulations during conducted emission test.

The bandwidth of the test receiver (R&S Test Receiver ESR) is set at 10KHz.

The frequency range from 150 KHz to 30 MHz is investigated.

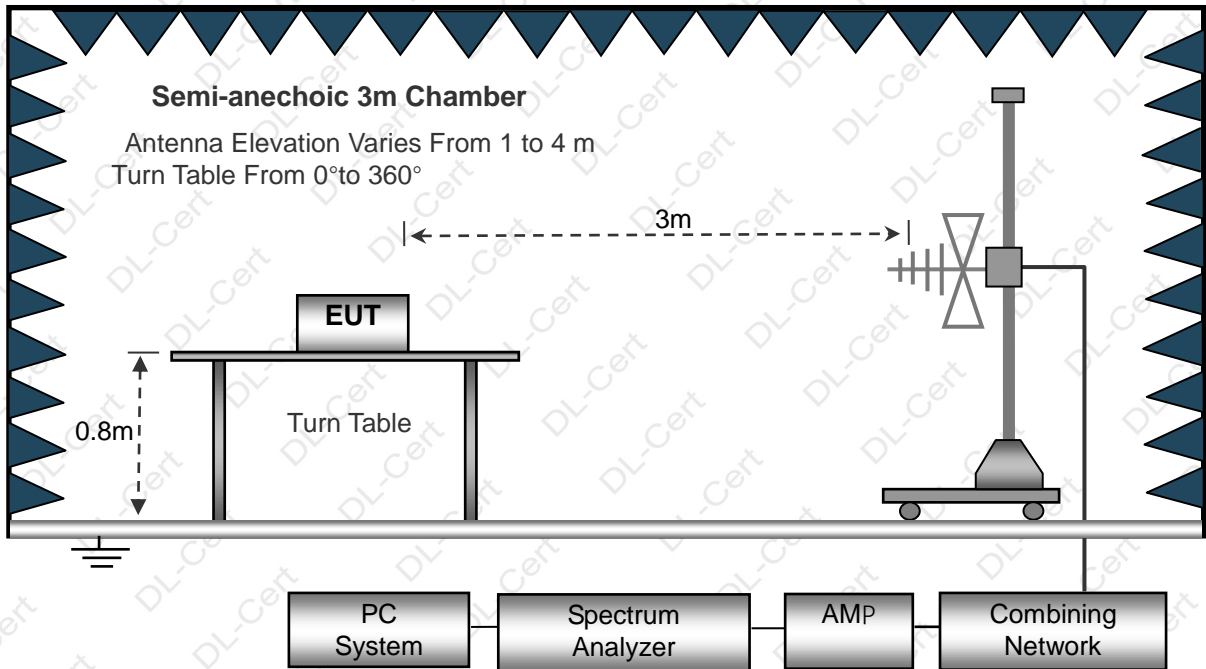
5.6 Test Result

The EUT is powered by DC, no requirements for this item.

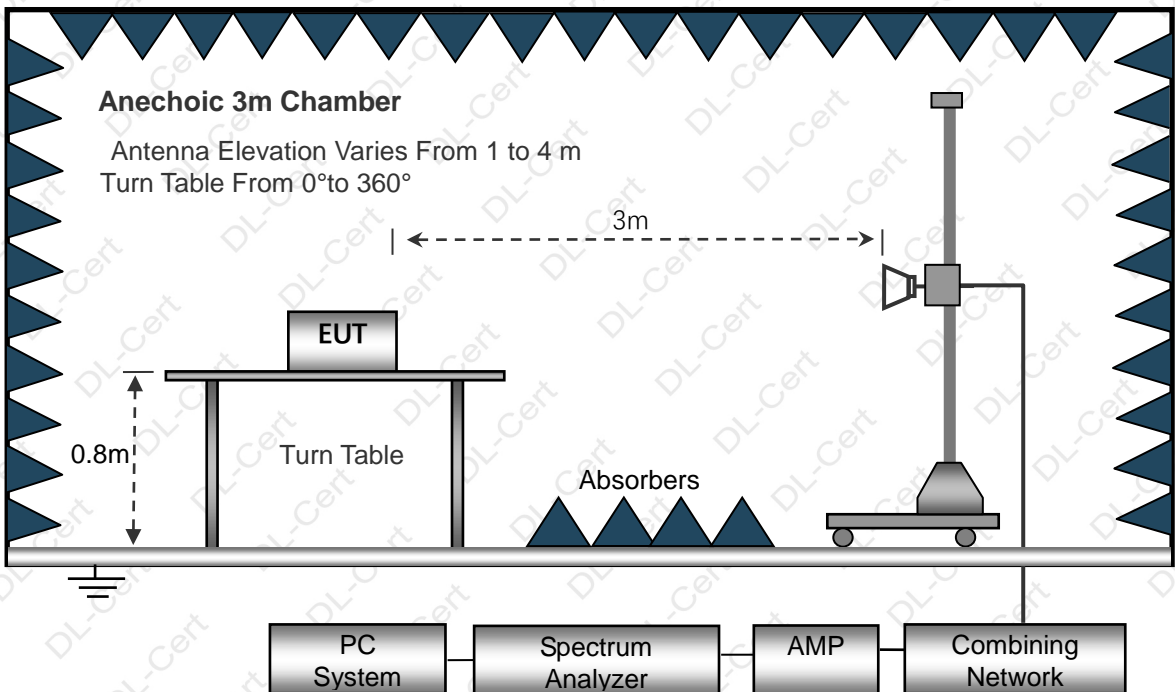
6. RADIATION EMISSION TEST

6.1 Block Diagram of Test Setup

Below 1GHz



Above 1GHz



6.2 Test Standard and Limit

FCC PART 15 B



Below 1GHz

Frequency (MHz)	Distance (Meters)	Field Strengths Limits (dB μ V/m)
30 ~ 88	3	40.0
88 ~ 216	3	43.5
216 ~ 960	3	46.0
960 ~ 1000	3	54.0

Above 1GHz

Frequency MHz	Distance (Meters)	Field Strengths Limits dB(μ V)/m	Detector
1000~6000	3	74.0	PEAK
1000~6000	3	54.0	AVERAGE

Remark:

(1) The smaller limit shall apply at the cross point between two frequency bands.

(2) Distance refers to the distance in meters between the measuring instrument, antenna and the closed point of any part of the device or system.

6.3 EUT Configuration on Test

The FCC PART 15 B regulations test method must be used to find the maximum emission during radiated emission test.

The configuration of EUT is the same as used in conducted emission test.

Please refer to Section 5.3.

6.4 Operating Condition of EUT

Same as conducted emission test, which is listed in Section 5.4 except the test set up replaced as Section 6.2.

6.5 Test Procedure

- 1) The radiated emissions test was conducted in a semi-anechoic chamber.
- 2) The tabletop EUT was placed upon a non-metallic table 0.8m above the ground reference plane. And for floor-standing arrangement, the EUT was placed on the horizontal ground reference plane, but separated from metallic contact with the ground reference plane by 0.1m of insulation.
- 3) Before final measurements of radiated emissions, a pre-scan was performed in the spectrum mode with the peak detector to find out the maximum emissions spectrum plots of the EUT.
- 4) The frequencies of maximum emission were determined in the final radiated emissions measurement. At each frequency, the EUT was rotated 360°, and the antenna was raised and lowered from 1 to 4 meters in order to determine the maximum disturbance. Measurements were performed for both horizontal and vertical antenna polarization.
- 5) The bandwidth setting on the field strength meter (R&S Test Receiver ESCI) is set at 120KHz.
- 6) The frequency range from 30MHz to 1000MHz is checked.

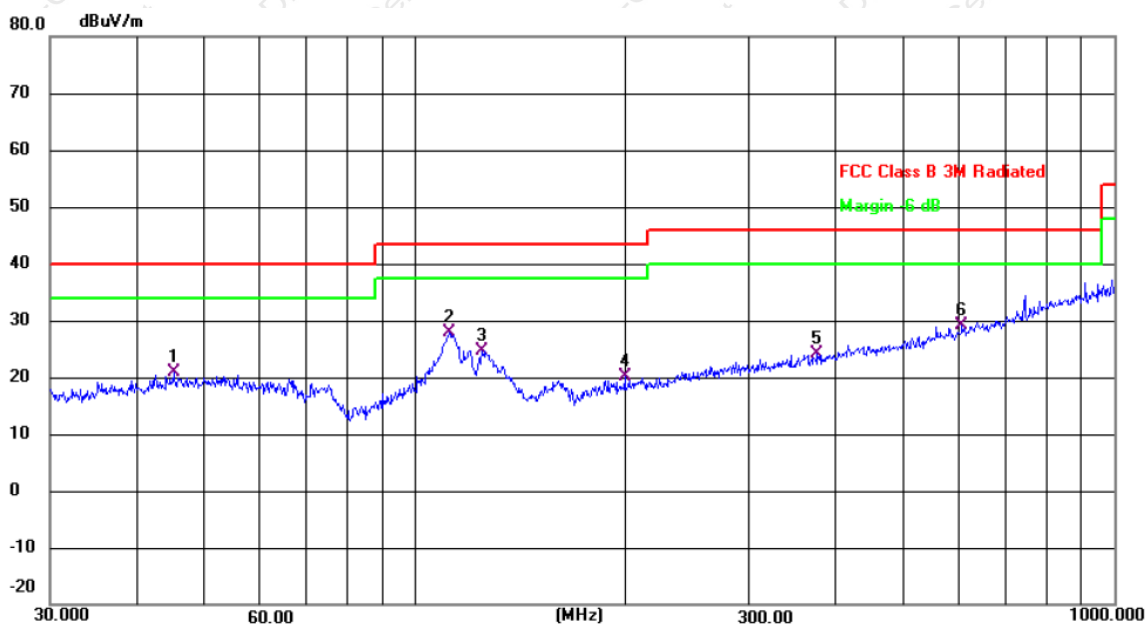
6.6 Test Result

PASS

Please refer to the following page.



Radiation Emission Test Data			
Temperature:	24.5°C	Relative Humidity:	54%
Pressure:	1009hPa	Polarization:	Horizontal
Test Voltage:	DC 20V	Test Mode:	Mode 1



No.	Mk.	Freq. MHz	Reading Level dBuV	Correct Factor dB/m	Measure- ment dBuV/m	Limit dBuV/m	Margin dB	Detector	Comment
1		45.0583	27.88	-7.07	20.81	40.00	-19.19	QP	
2	*	111.7380	37.48	-9.48	28.00	43.50	-15.50	QP	
3		124.5690	36.15	-11.62	24.53	43.50	-18.97	QP	
4		199.2855	29.06	-8.94	20.12	43.50	-23.38	QP	
5		375.9385	28.02	-3.94	24.08	46.00	-21.92	QP	
6		605.6592	28.70	0.40	29.10	46.00	-16.90	QP	

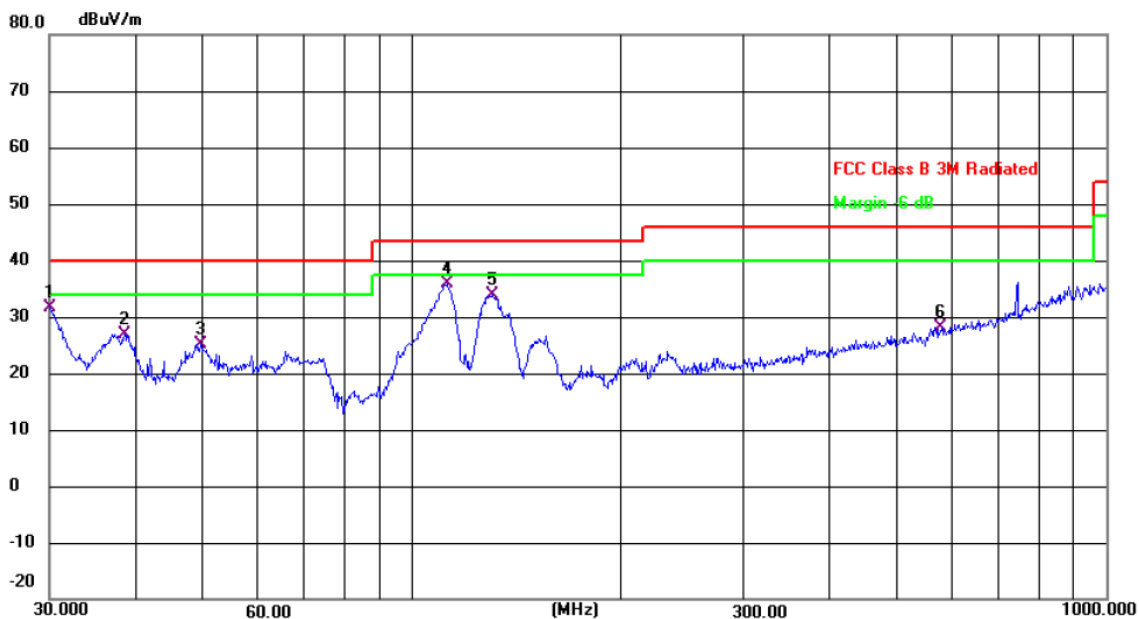
Remark:

Correct Factor = Cable loss + Antenna factor – Preamplifier;

Measurement Level = Reading Level + Correct Factor; Margin = Measurement Level- Limit ;



Radiation Emission Test Data			
Temperature:	24.5°C	Relative Humidity:	54%
Pressure:	1009hPa	Polarization:	Vertical
Test Voltage:	DC 20V	Test Mode:	Mode 1



No. Mk.	Freq. MHz	Reading Level dBuV	Correct Factor dB/m	Measurement dBuV/m	Limit dBuV/m	Margin dB	Detector	Comment
1	30.0000	41.30	-9.65	31.65	40.00	-8.35	QP	
2	38.4809	35.22	-8.29	26.93	40.00	-13.07	QP	
3	49.5328	32.29	-7.11	25.18	40.00	-14.82	QP	
4 *	112.1305	45.43	-9.54	35.89	43.50	-7.61	QP	
5	130.3789	45.99	-12.18	33.81	43.50	-9.69	QP	
6	578.6699	28.17	0.04	28.21	46.00	-17.79	QP	

Remark:

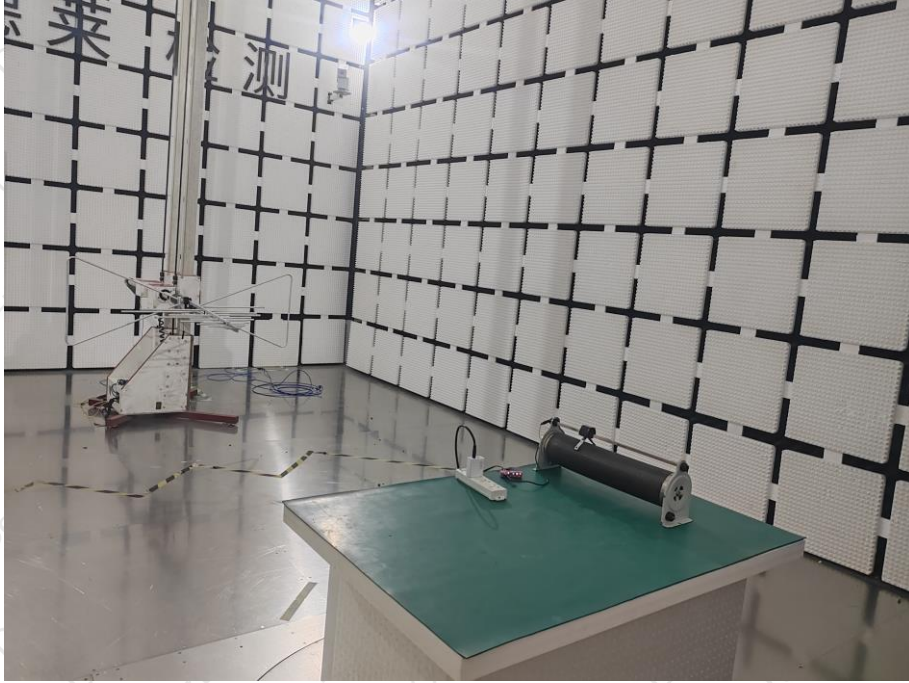
Correct Factor = Cable loss + Antenna factor – Preamplifier;

Measurement Level = Reading Level + Correct Factor; Margin = Measurement Level- Limit ;



7. SETUP PHOTOGRAPHS

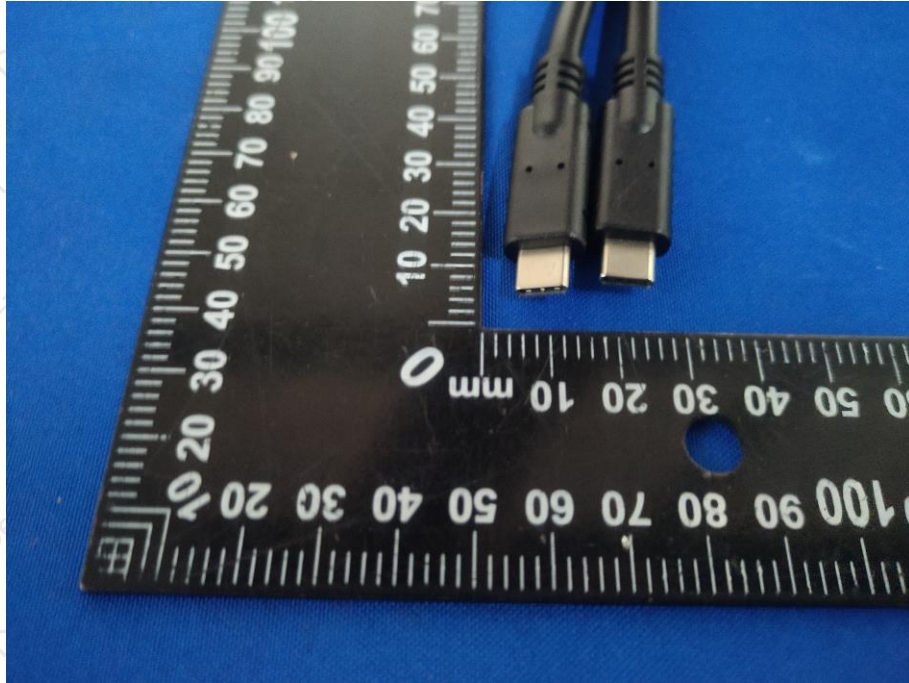
Radiated Measurement Photos





8. EUT PHOTOGRAPHS





***** END OF REPORT *****